

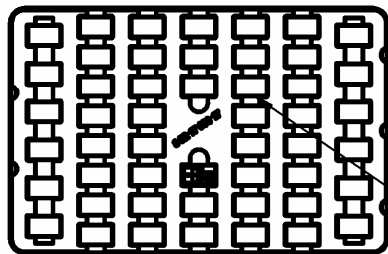
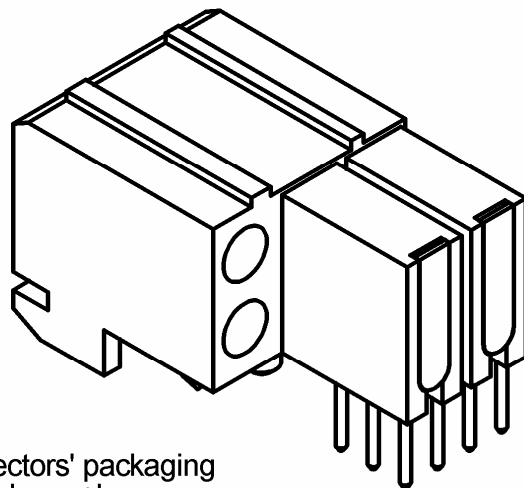
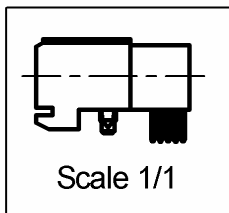
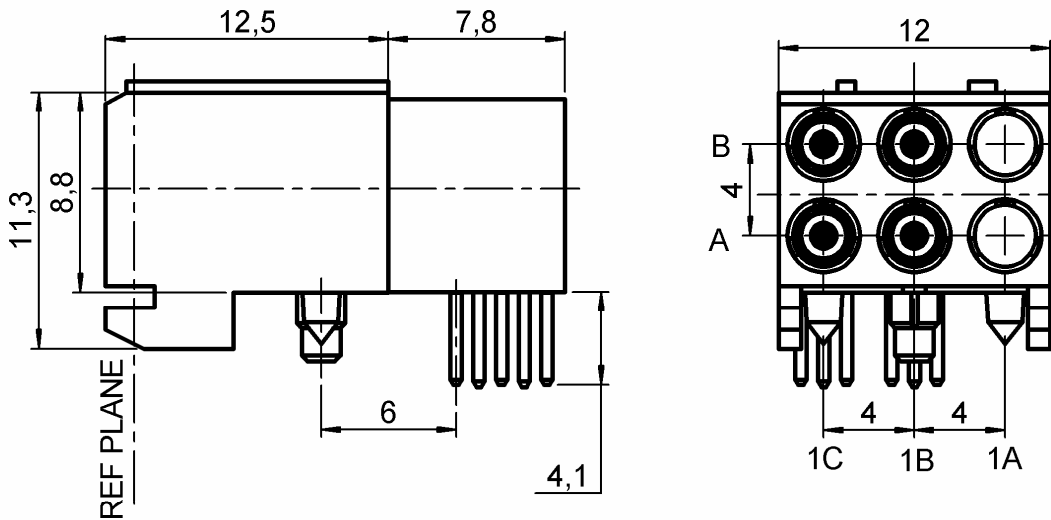
R/A FEMALE MODULE 4 SOLDER TYPE INSERTS

R694.252.175

SOLDER TYPE 4.5MM C50

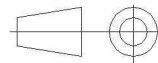
Series : MCC2

4 COAX POSITION AB/1B, 1C



Connectors' packaging
Tray+sleeve+box

All dimensions are in mm.



| COMPONENTS | MATERIALS | PLATING (µm) |
|----------------|------------------|--------------|
| BODY | BRASS | NPGR |
| CENTER CONTACT | BERYLLIUM COPPER | NPGR |
| OUTER CONTACT | - | - |
| INSULATOR | PEEK , ULTEM | - |
| GASKET | - | - |
| OTHERS PARTS | BRASS | NICKEL 2 |
| - | - | - |
| - | - | - |

Issue : 0632 G

In the effort to improve our products, we reserve the right to make changes judged to be necessary.



R/A FEMALE MODULE 4 SOLDER TYPE INSERTS

R694.252.175

SOLDER TYPE 4.5MM C50

Series : **MCC2**

PACKAGING

SPECIFICATION

| Standard | Unit | Other |
|-----------|-------------------|-------------------|
| 50 | 'W' option | Contact us |

ELECTRICAL CHARACTERISTICS

ENVIRONMENTAL

| | | |
|---------------------------------|------------------------------|--------------------------|
| Impedance | 50 | Ω |
| Frequency | 0-6 | GHz |
| VSWR | 1.15* + 0,0000 | x F(GHz) Maxi |
| Insertion loss | 0.2** | \sqrt{F} (GHz) dB Maxi |
| RF leakage | - (30) | - F(GHz)) dB Maxi |
| Voltage rating | 500 | Veff Maxi |
| Dielectric withstanding voltage | 750 | Veff mini |
| Insulation resistance | 5000 | M Ω mini |

| | | |
|-----------------------|-----------------|--------------|
| Operating temperature | -25/+125 | $^{\circ}$ C |
| Hermetic seal | NA | Atm.cm3/s |
| Panel leakage | NA | |

OTHER CHARACTERISTICS

Assembly instruction

Others :

*VSWR optimized between DC to 3GHz

**DC-3GHz

MECHANICAL CHARACTERISTICS

| | | |
|----------------------------|-----------|-----------|
| Center contact retention | | |
| Axial force – Mating end | 6 | N mini |
| Axial force – Opposite end | 6 | N mini |
| Torque | NA | N.cm mini |

| | | |
|--------------------|-----------|------|
| Recommended torque | | |
| Mating | NA | N.cm |
| Panel nut | NA | N.cm |

| | | |
|-------------|----------------|-------------|
| Mating life | 500 | Cycles mini |
| Weight | 90,5900 | g |

Issue : 0632 G

In the effort to improve our products, we reserve the right to make changes judged to be necessary.

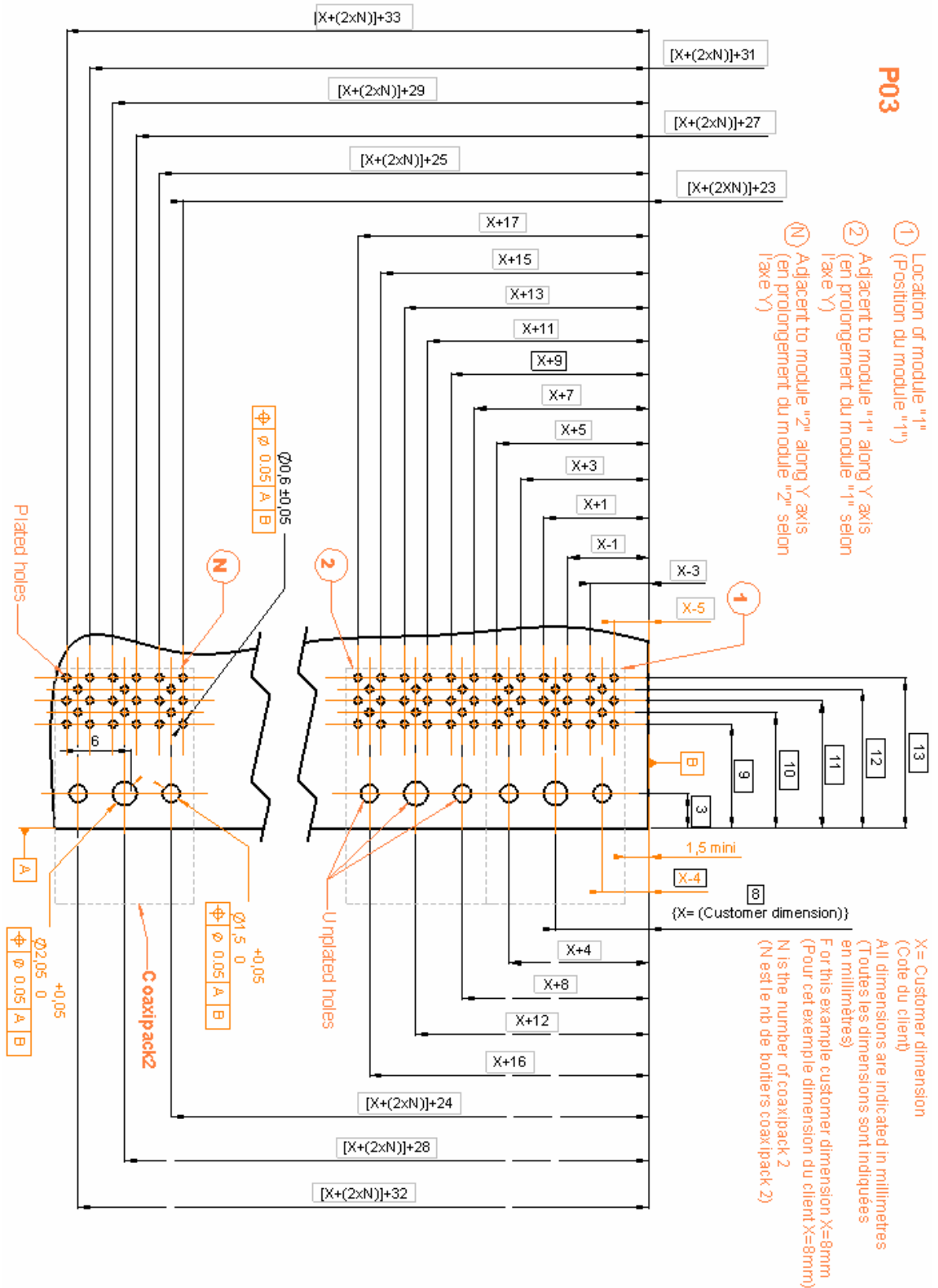


R/A FEMALE MODULE 4 SOLDER TYPE INSERTS

R694.252.175

SOLDER TYPE 4.5MM C50

Series : MCC2



Issue : 0632 G

In the effort to improve our products, we reserve the right to make changes judged to be necessary.



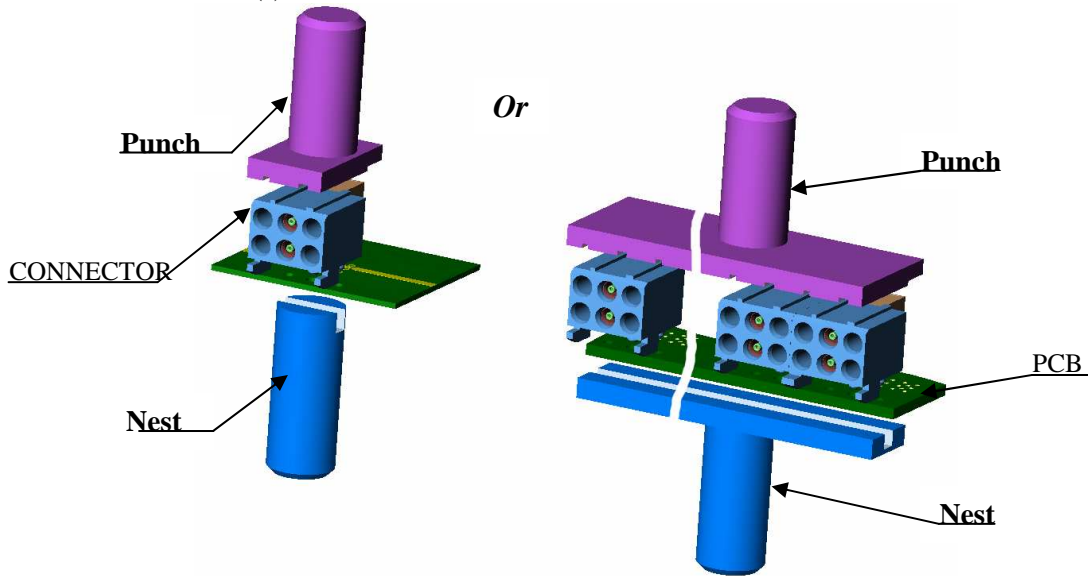
R/A FEMALE MODULE 4 SOLDER TYPE INSERTS

R694.252.175

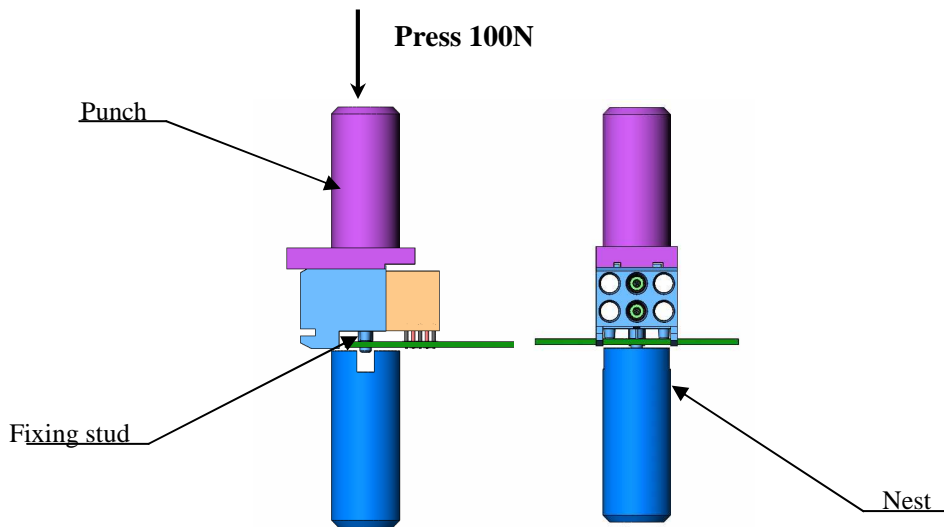
SOLDER TYPE 4.5MM C50

Series : MCC2

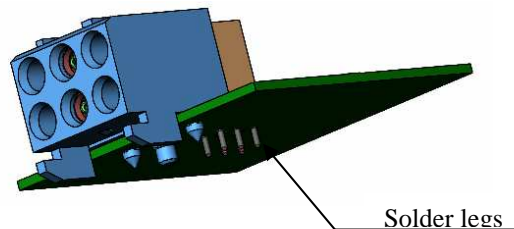
- Place the coax connector(s) on the PCB



- Place correctly the PCB between the punch and the nest of the press.
- In case of multiple housing configuration , use a punch and a nest large enough to cover all the housings.
- Press on the plastic housing(s) with the punch until the complete insertion of the fixing stud into the PCB.



- Solder the legs on board



Radiall do not recommend to use more than 3 modules on the same motherboard and can't be held liable of any connection defect when more than 3 modules are implemented on the board.

Issue : 0632 G

In the effort to improve our products, we reserve the right to make changes judged to be necessary.

